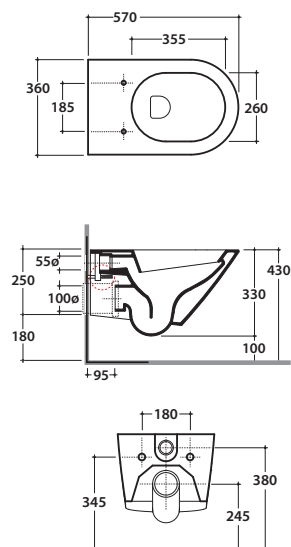
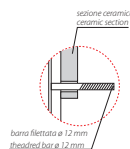


# FORTY3 VASO SOSPESO FOS02.BI

# GLOBO



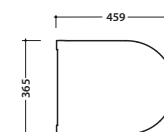
Cod. **FOS02.BI**

Vaso sospeso con sistema di fissaggio dal basso nascosto. Scarico 4,5 / 3 Lt. Peso 20kg  
*Wall-hung pan provided with lower hidden fixing system. Drain 4,5 / 3 Lt. Weight 20 kg.*



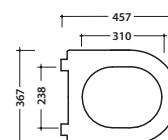
Cod. **FOQ19BI**

Coprivaso rimovibile in duroplast con chiusura tradizionale. Peso 3,5 Kg  
*Removable duroplast seat-cover with traditional closing system. Weight 3,5 Kg*



Cod. **FOQ20BI**

Coprivaso rimovibile in duroplast con chiusura rallentata. Peso 3,5 kg  
*Removable duroplast seat-cover with soft-closing system. Weight 3,5 kg*



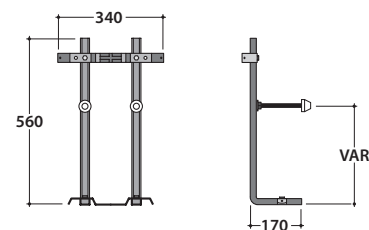
Cod. **VA132**

Riduttore flusso di scarico.  
*Flow reductor.*



Cod. **FI002**

Staffa di fissaggio a "L". (Barra filettata  $\varnothing 12$ ). Peso 2,5 kg.  
*Fixing brackets for W/H sanitary. The thread bar  $\varnothing 12$ . Weight 2,5 kg.*



Cod. **PU001**

Protezione antiurto e acustica. Peso 0,2 kg.  
*Acoustic and crash protection. Weight 0,2 kg.*